

# 303 Series

## Uses:

- Fail Safe Relays
- Latching Relays
- Indicators
- Multi Coil
- Positive Common
- TTL Logic Driven
- Decode

## Features:

- One-Pass Testing including:
  - Coil Resistance
  - Contact Resistance
  - Operate Release
  - Timing
  - Insulation Resistance
- Multi Coil Driver
- TTL Logic Control
- Simple Programming
- Easy-to-use Operation

*Ask about RF Test Integration!*



## Parametric Test System for Coaxial Relays

### Overview

Designed specifically for the coaxial relay manufacturer and user, the SemiTek 303-Series Test System for Coaxial Relays is easy to use and maintain. The system can perform an array of tests in One-Pass of any multi-coil relay. Ease of use and overall system flexibility make the 303 ideal for applications in development, incoming inspection, and production line testing.

In development, the system allows the engineer to step through each test to analyze the result as desired. In incoming inspection, lots can be tested quickly and results maintained in a database for reference. In production, relays can be categorized and serial numbered for tracking.

The 303 Tester Operating System (TOS) is compatible with Microsoft Windows XP. Engineers program and use the TOS Build Editor to generate and maintain test files specifying every action of the tester. Operators control the 303 from the TOS Main Window with easy to use, large icons. A tailored window guides the operator to access and run the appropriate test file using user-defined relay nomenclature. Pass/Fail indicators are clearly visible from the display along with a detailed report of the actual test results.

No other test system on the market can match the speed and ease of use available in the SemiTek 303-Series Test System for Coaxial Relays.

For more detailed specifications, visit  
[www.semitek.com](http://www.semitek.com)  
Call 1.888.SEMITEK  
Or 972.783.8100  
Fax: 972.783.8293  
email: [info@semitek.com](mailto:info@semitek.com)



*The 303-Series of Relay Testers*

• PARAMETRIC • AC DIELECTRIC • LIFE • STICK/MISS • COAXIAL •

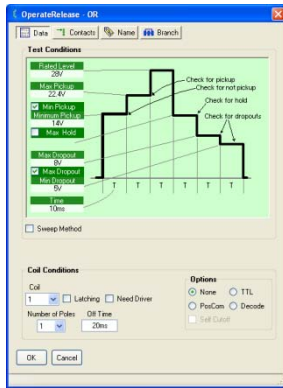
# 303 Series

## Coaxial Relay Test System

### Specifications

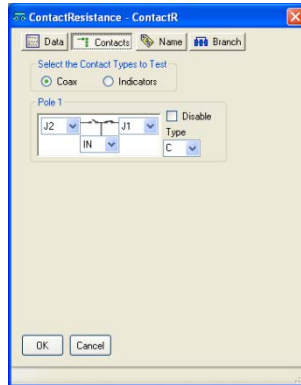
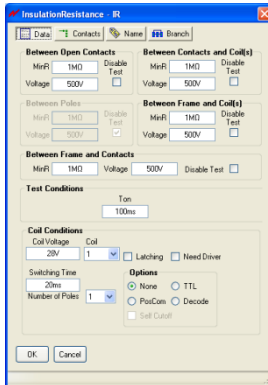
- Pull In/Drop Out: Voltage Source 20 to 240V  
Current Meter 200uA to 200mA
- Contact Resistance to 2kΩ
- Multi-Coil Driver to 48VDV, 2A
- Coil Resistance to 2kΩ
- Coil Current to 2A
- Insulation Resistance (to 1000VDC): to 10Gohm
- Operate, Release, Bounce (Resolution 1us, Accuracy 10us)
  - Operate / Release to 16s
  - Bounce to 100ms

### Programming



Engineers use the Build Editor within TOS to generate and maintain test routines. These instructions can also be maintained using Microsoft's Excel® if so desired.

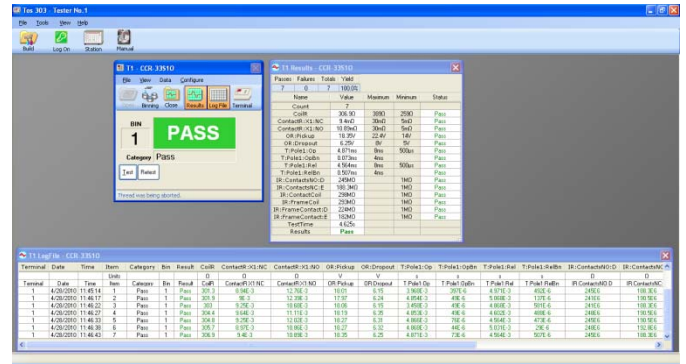
To program, you select the desired preformatted modules and specify the stimulus and acceptance criteria required. Help is provided for each module to complete the required test instruction.



Individual modules are assembled to control each test or step of a routine. Modules define application voltage or current and acceptance voltage, current, time, or resistance based on the type of test. General modules specify system commands such as Pause, Wait, and Test Time. The relay under test is defined in the Contacts tab and features a graphic illustration to aid the programmer. Custom modules may be written to perform special or unique tests as necessary.

© Copyright 2010 SemiTek, Inc. All rights reserved. Products and company names listed are trademarks or trade names of their respective companies. Specifications subject to change without notice. 04/10

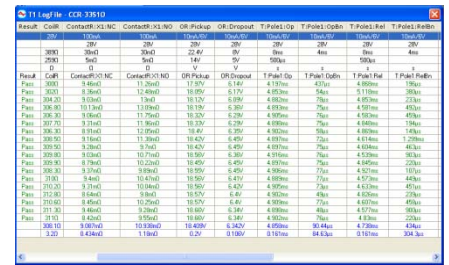
### Operation



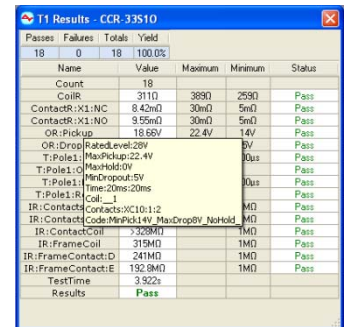
The 303 TOS software is user-friendly and provides easy-to-follow instructions for operating the tester.

The TOS Main Window provides access to test files, output data reports, and views of the active Test Terminals which appear as separate windows. Individual test programs and other system functions are accessible from the Main Menu.

Test results can be displayed in columns and exported to Microsoft Excel® for further evaluation. Mean and Standard Deviation values can be displayed in real-time.



You can use your mouse to hover over a test label to see the parameters of the test instructions. This is a useful tool in troubleshooting and test.



Functions are password programmable. Complete diagnostic and calibration procedures are included.

### Configuration

The 303 comes in a bench-top or rack-mount configuration. Easily removable plug-in cards provide flexibility to configure the tester for any application.

- Options include:
- Additional test terminals or sites
  - Customized Interface Fixtures
  - Tailored software for in-process tests

Ask about RF Test Integration!



870 N. Dorothy Drive • Richardson, TX 75081  
972.783.8100 • 972.783.8293  
email: info@semitek.com • www.semitek.com

SYSTEM DETAILS