



303-Opto Test System

The SemiTek 303-Opto Test System has been developed for application-specific needs and features plug-in boards designed for specific test functions. This new concept provides you the most economical, versatile solution for inspection testing available. It also allows you a greater flexibility within a specific application for programming and data acquisition.

The 303-Opto Test System determines the electrical integrity of Opto devices. The system can perform an array of tests and control output binning in a fraction of the time of any other tester on the market. Controlled by a personal computer, the system is ideal for high-speed production and inspection testing.

Programming and data management has never been easier. The 303 uses Microsoft Excel® to maintain test files and provides a quick data output for data logging and statistical analysis.

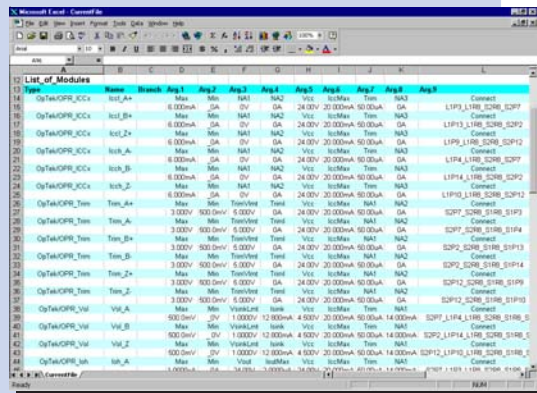


For high-speed production applications, the 303 can be fully integrated with any handler/prober system.



The 303-Opto Test System provides the following test capabilities:

- Breakdown Voltages
- Leakage Current
- Forward/Reverse Voltage
- Forward Current
- Intensity
- Responsivity
- Logic Stimulus
- Gain • Timing



Test results exported in Microsoft Excel®

The Windows-based Tester Operating System gives complete process control to the operator.

The Build Editor simplifies the creation of test programs using preformatted module sets detailing stimulus and acceptance criteria.

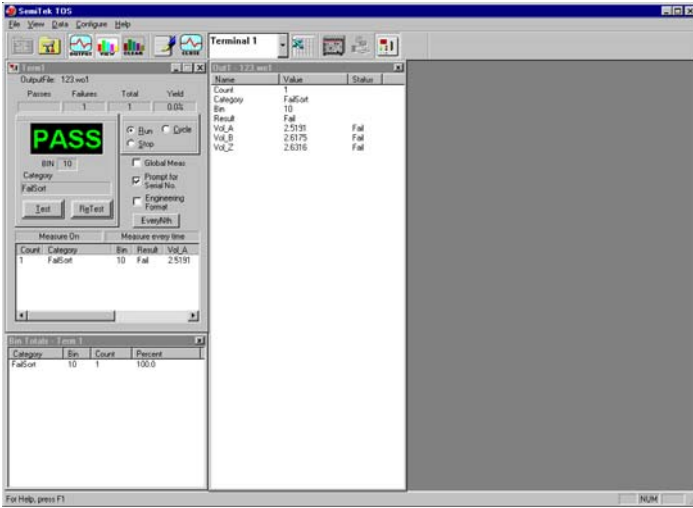
Plug-in boards provide the hardware control of the system. Options may be added after installation to increase the number of terminals or test capability.

Specifications

Test	Range	Resolution
SMU Measurement and Source		
Voltage	0 to 10V	0.3mV
	0 to 80V	3mV
Current	0 to 200nA	12.5pA
	0 to 2uA	125pA
	0 to 20uA	1.25nA
	0 to 200uA	12.5nA
	0 to 2mA	125nA
	0 to 20mA	1.25uA
LED Driver		
Voltage Measurement	0 to 5V	0.3mV
Current Source	0 to 2mA	125nA
	0 to 20mA	1.25uA
	0 to 200mA	12.5uA
	0 to 2A	125uA

303-Opto Test System

Software



The 303 Tester Operating System (TOS) software controls the test system. Engineers program and operators control the 303-Opto Test System from the TOS Main Window.

Views of the active Test Terminals appear as separate windows. Access to individual test programs and other system functions is accessible from the Main Menu.

A summary of the test data appears in the Bin Totals window while real-time individual test results appear in the Output window.

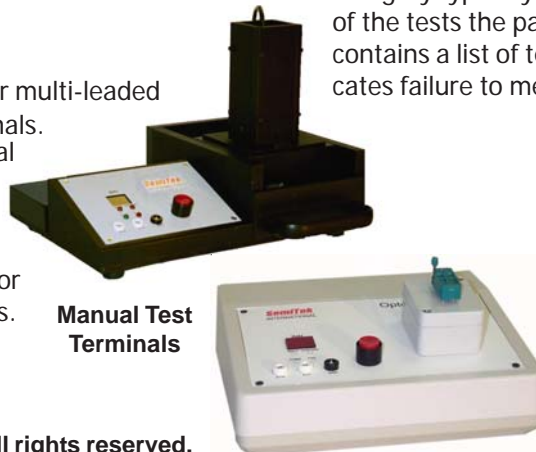
Each function is password programmable and a complete diagnostic and calibration procedure is included.

Configuration

The 303 comes in a bench-top or rack-mount configuration. Easily removable plug-in cards provide flexibility to configure the tester for any application. The minimum cards required are the Slot Zero card, Opto SMU, Opto Matrix, and System Power Supply.

Options include:

- Additional Opto Matrix Cards for multi-leaded devices and multiple test terminals.
- Manual test sites. Each Terminal I/O Card can control up to six manual test terminals.
- Customized Interface Fixtures.
- 303-Handler/Prober Interface for Handler or Prober test terminals.
- Logic Stimulus
- Timing

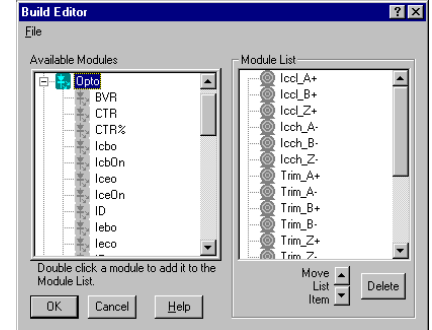


Manual Test Terminals

Modular Programming

The TOS Build Editor generates and maintains test file data instructions. These instructions can also be maintained using Microsoft's Excel® if so desired.

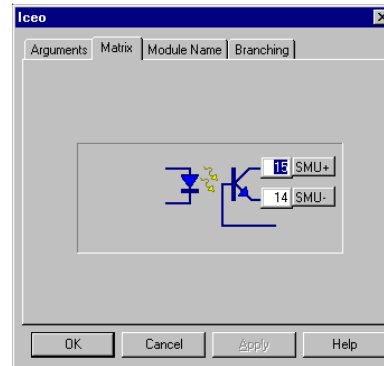
To program, you select the desired preformatted modules and configure them with the stimulus and acceptance criteria necessary. Once the information is complete, the test file is ready for use.



Online Help is available and fully defines the acceptable limits for each test or operation.

- **General Modules**

General modules are used to specify a variety of system commands such as Pause, Wait, Message, and Categories.



- **Opto Modules**

The Opto Modules perform the tests that determine the parameters of the device under test.

- **Custom Modules**

You can setup Custom Modules to perform special or unique tests as necessary.

- **Categories**

The Categories module determines which modules a device must pass to be categorized as the part number specified.

There are two types of categories, Pass and Fail. A Pass category typically has the name of the part number and a list of the tests the part must pass to meet spec. A Fail category contains a list of tests on which any failure by the part indicates failure to meet spec.



870 N Dorothy Drive, Suite 714
Richardson, Texas USA 75081
(972) 783-8100 Fax (972) 783-8293
e-mail: sales@semitek.com
www.semitek.com